



DC
LANE

SELL • LET • MANAGE

Benbow Street, Plymouth, PL2 1BX

£1,350 Per Month





Benbow Street

Plymouth, PL2 1BX

- First Floor Maisonette
- One En-suite & Shower Room
- Furnished
- Council Tax Band B
- Stoke Village Location
- Five Double Bedrooms
- Arranged over Two Floors
- Available Late April
- Gas Central Heating
- Ideal for Sharers

DC Lane are delighted to present a first floor maisonette located in the Stoke area in Plymouth, close to popular Stoke Village and Plymouth Dockyard and with excellent local transport links. With own private entrance on the ground floor stairs rise to the first floor with lounge/diner, modern kitchen, shower room and three double bedrooms. To the second floor there are two double bedrooms one en-suite. This property would be ideal for a group of sharers, Furnished Available Late April

£1,350 Per Month



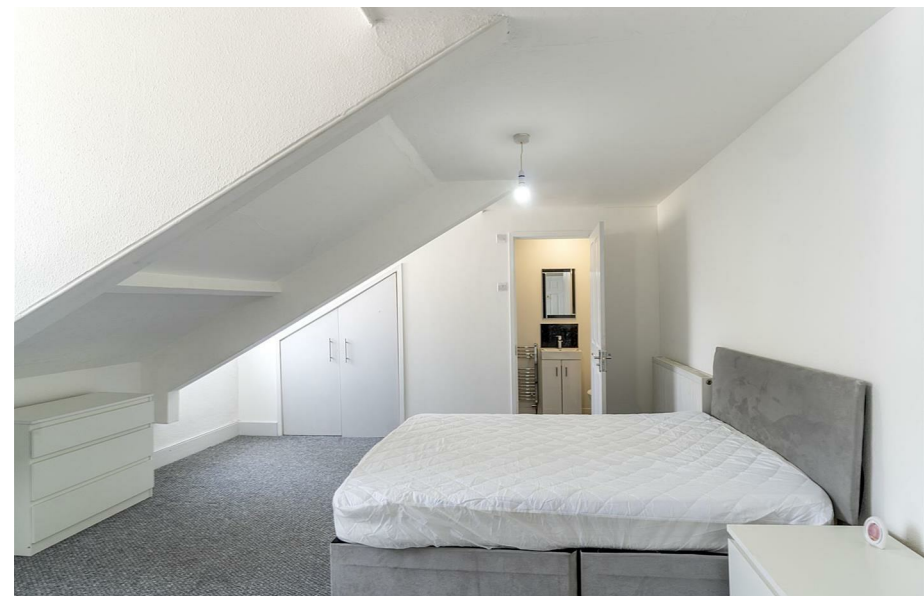


Directions

Scan for Material Information



Council Tax Band: B

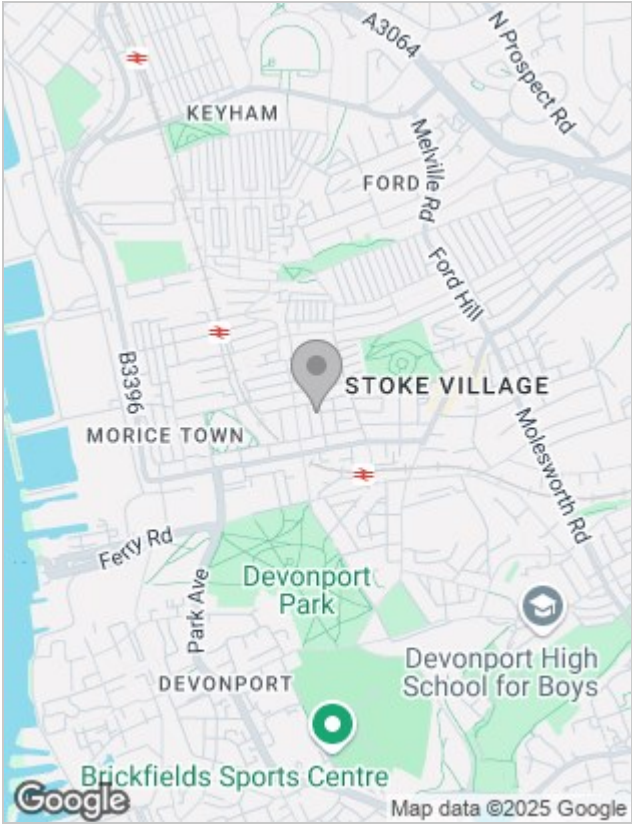




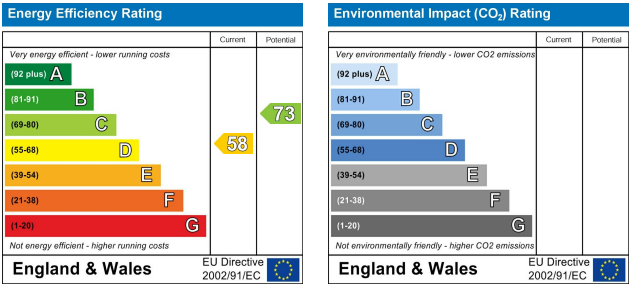
Floor Plans



Location Map



Energy Performance Graph



Viewing

Please contact our DC Lane, Plymouth Office on 01752 874242 if you wish to arrange a viewing appointment for this property or require further information.

The particulars are set out as a general outline only for the guidance of intended purchasers or lessees, and do not constitute, any part of a contract. Nothing in these particulars shall be deemed to be a statement that the property is in good structural condition or otherwise nor that any of the services, appliances, equipment or facilities are in good working order. Purchasers should satisfy themselves of this prior to purchasing.