

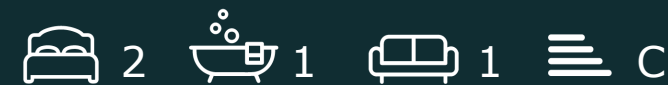
DC  
LANE

SELL • LET • MANAGE



St. Marys Court, Plymouth, PL7 4PE

£850 Per Month





£850 Per Month

# St. Marys Court

Plymouth, PL7 4PE

- First Floor Apartment
- Popular Plympton Location
- Well Presented
- Electric Heating
- Flexible Furnishings
- Purpose Built
- Two Bedrooms
- Allocated Parking
- Available Early December
- Council Tax Band A

DC Lane are delighted to present this lovely apartment in St. Marys Court in the heart of Plympton located within walking distance to local amenities and easy access to the A38 and all major routes. Positioned on the first floor the accommodation comprises of entrance porch, hallway, lounge with views over the surrounding area opening into the kitchen and two bedrooms serviced by a shower room. This purpose-built apartment offers a comfortable living space of 721 sq ft, providing ample room for all your needs. Furthermore there is allocated parking for one vehicle and electric heating.

Available Beginning December the apartment offers flexible furnishing either Furnished / Part Furnished or Unfurnished.





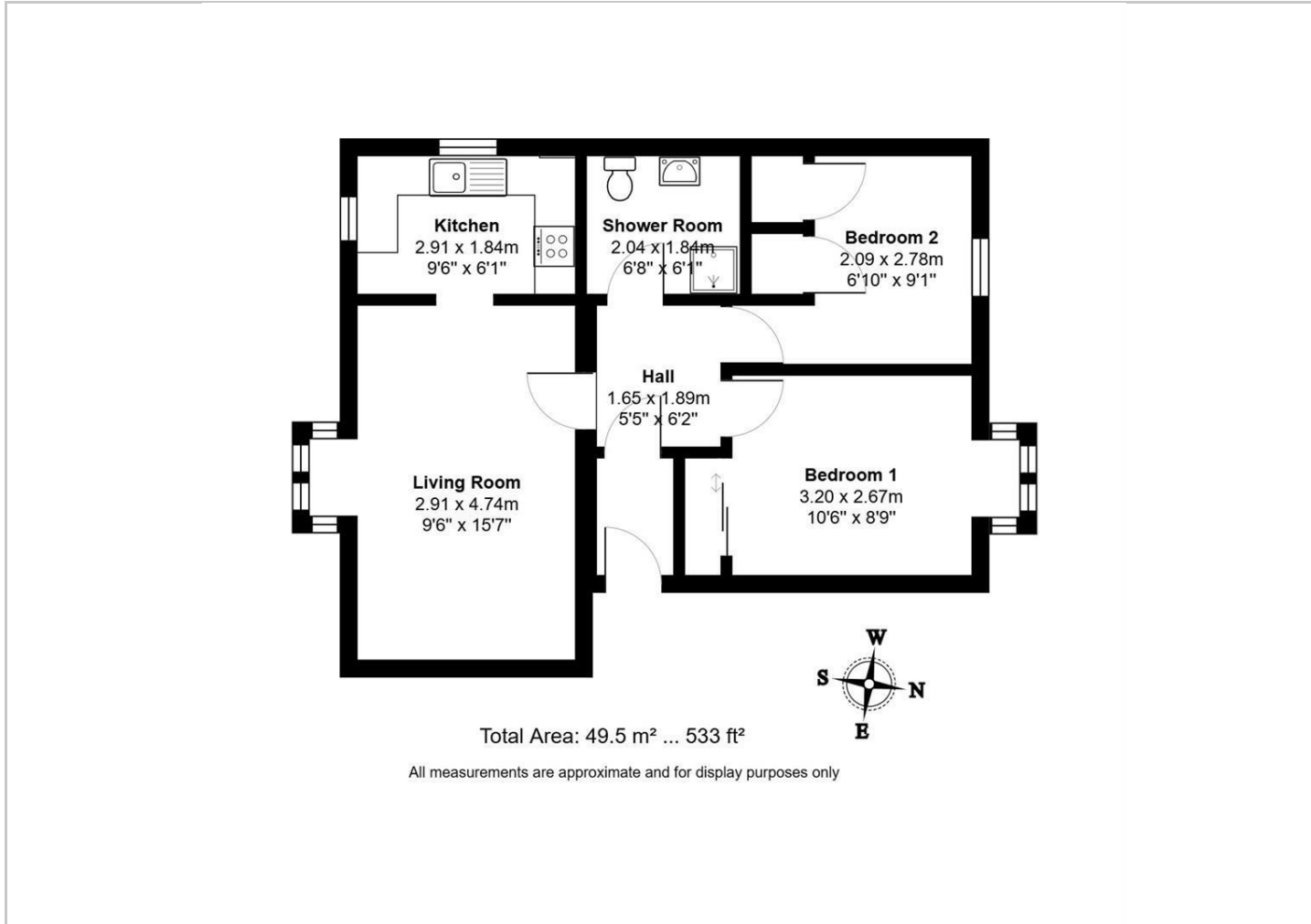
**Directions**

**Scan for Material Information**

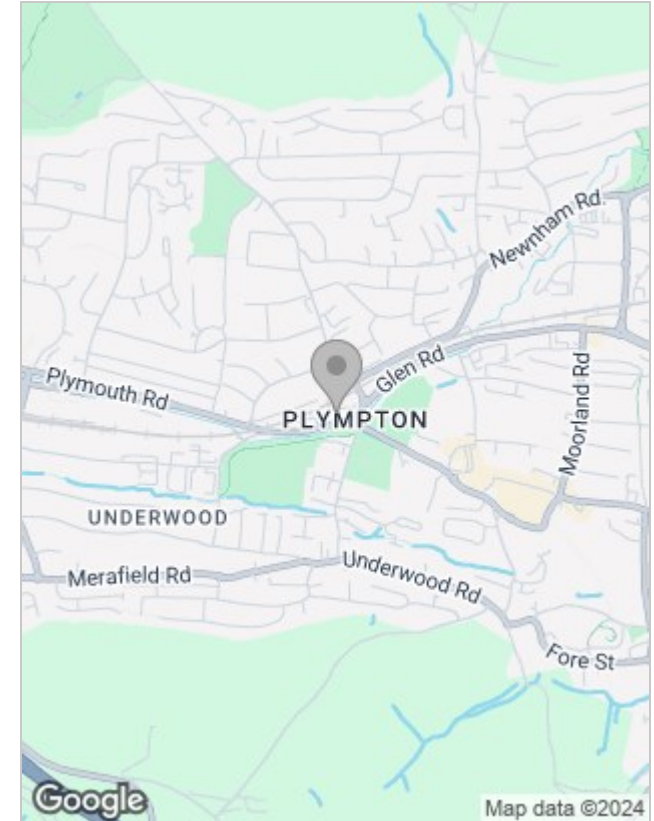
**Council Tax Band: A**



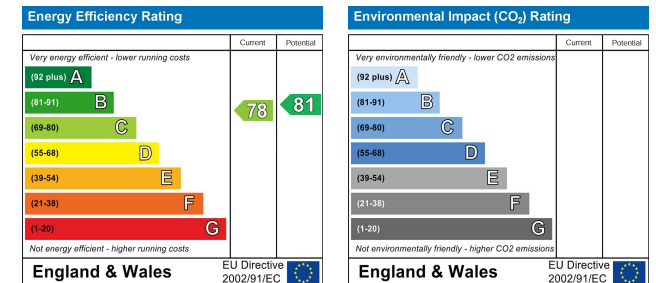
## Floor Plans



## Location Map



## Energy Performance Graph



## Viewing

Please contact our DC Lane, Plymouth Office on 01752 874242 if you wish to arrange a viewing appointment for this property or require further information.

The particulars are set out as a general outline only for the guidance of intended purchasers or lessees, and do not constitute, any part of a contract. Nothing in these particulars shall be deemed to be a statement that the property is in good structural condition or otherwise nor that any of the services, appliances, equipment or facilities are in good working order. Purchasers should satisfy themselves of this prior to purchasing.

**99 Mutley Plain, Mutley, Plymouth, Devon, PL4 6JJ**  
01752 874242 | hello@dclane.co.uk | www.dclane.co.uk